

INDONESIA HIDDEN HERITAGE
CREATIVE HUB

Going
Home



SATURDAY

18 PM

20

2023

JANUARY



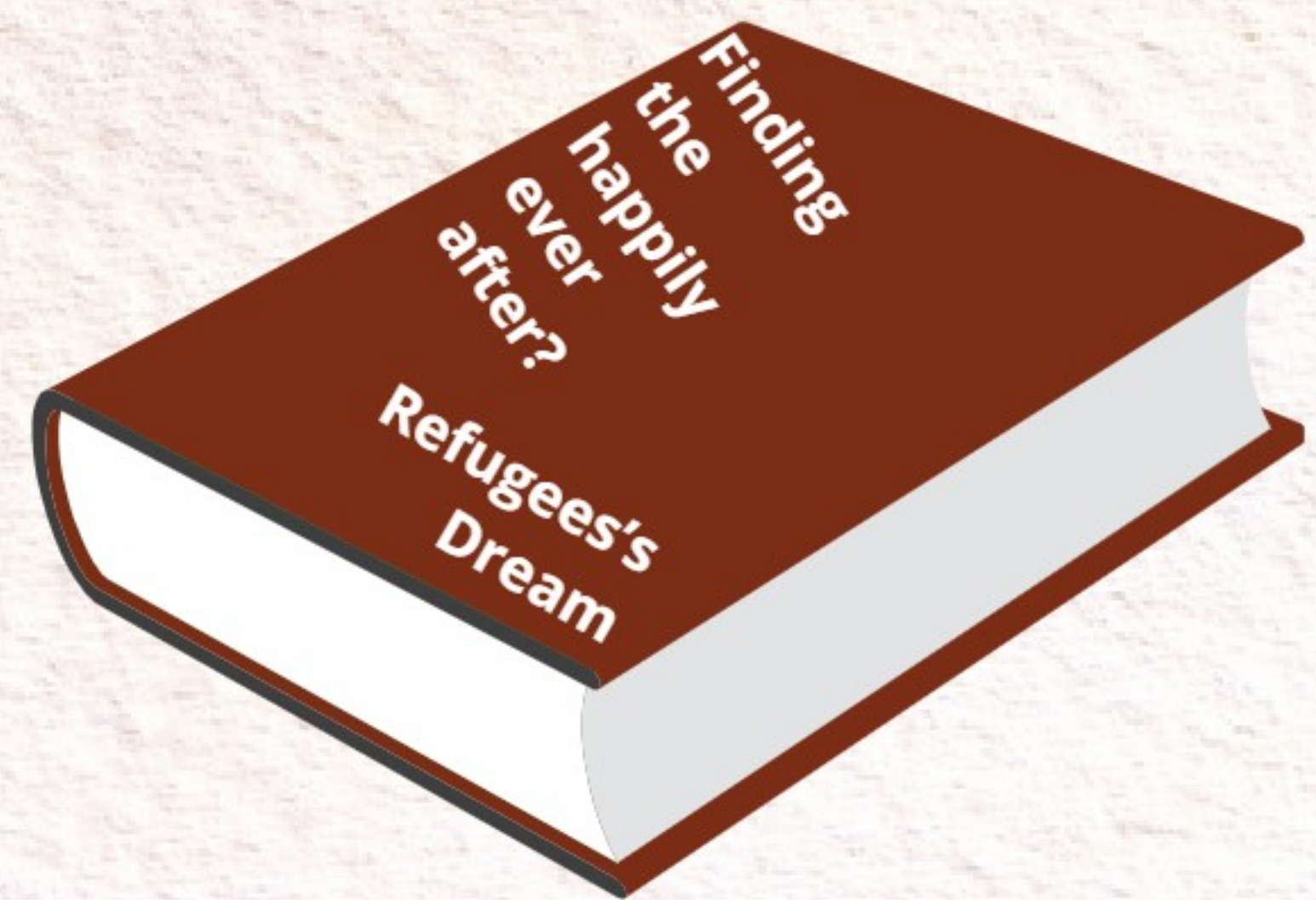
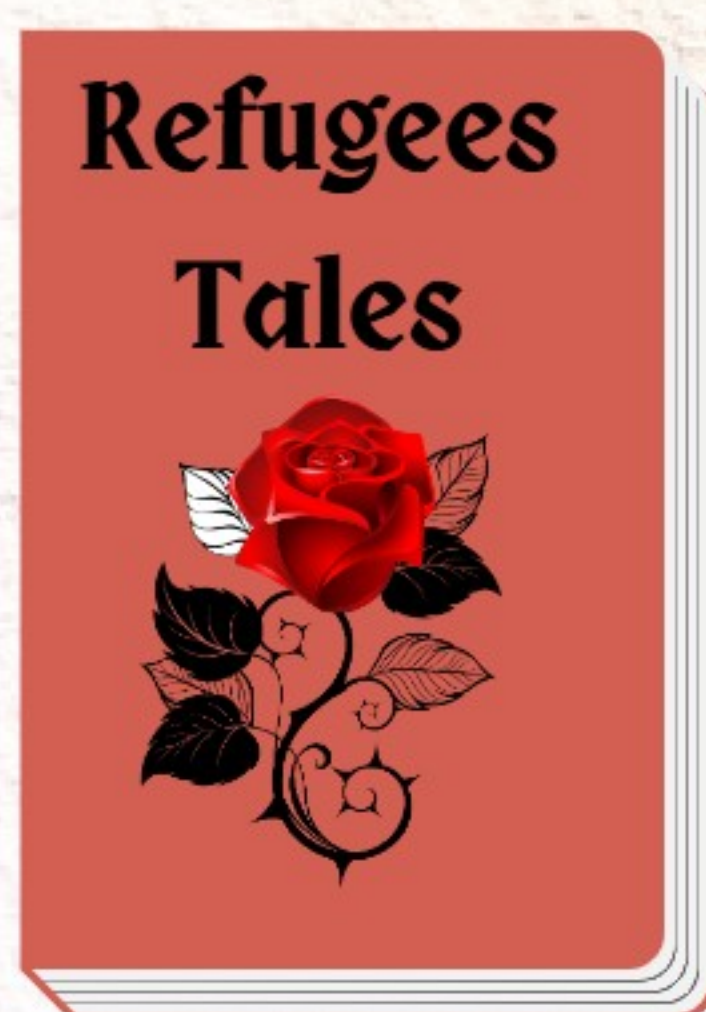
How Museum can play as a key role in welcoming
Refugees into local communities....

An Inspiring Evening Talk

@AMERICA,
PACIFIC PLACE

Those Whose Home Are Lost.....

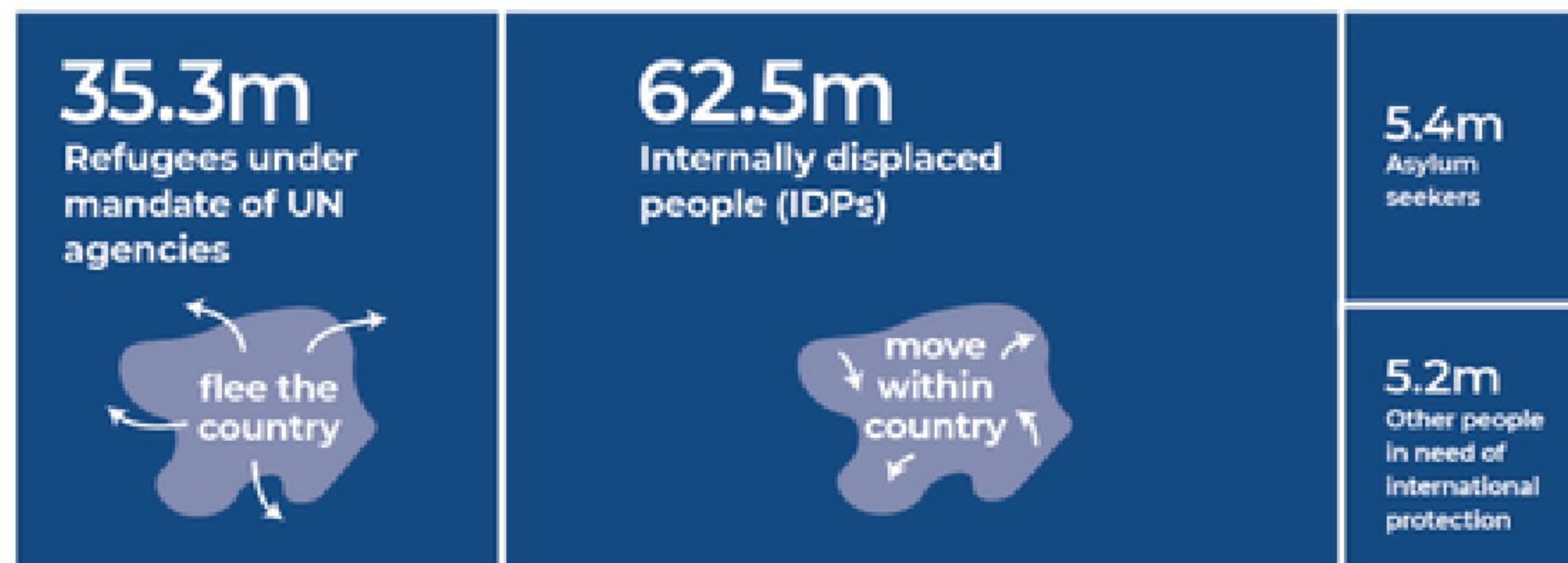
“ The number of people displaced around the world has reached a record 110 million, with the wars in Ukraine and Sudan forcing millions from their homes, the United Nations High Commissioner for Refugees (UNHCR) has said. About 19 million people were forced to flee last year – the biggest annual jump on record – lifting the total to 108.4 million by the end of last year, the UNHCR said in its annual Forced Displacement report. “



REFUGEES

Forcibly displaced people worldwide

At the end of 2022, **108.4 million people** were forcibly displaced as a result of persecution, conflict, violence, human rights violations and events seriously disturbing public order.



If forcibly displaced people formed a country, it would be the **14th** most populated in the world.



Wars in Sudan and Ukraine, as well as the Afghanistan crisis, have forced millions to flee in search for safety.

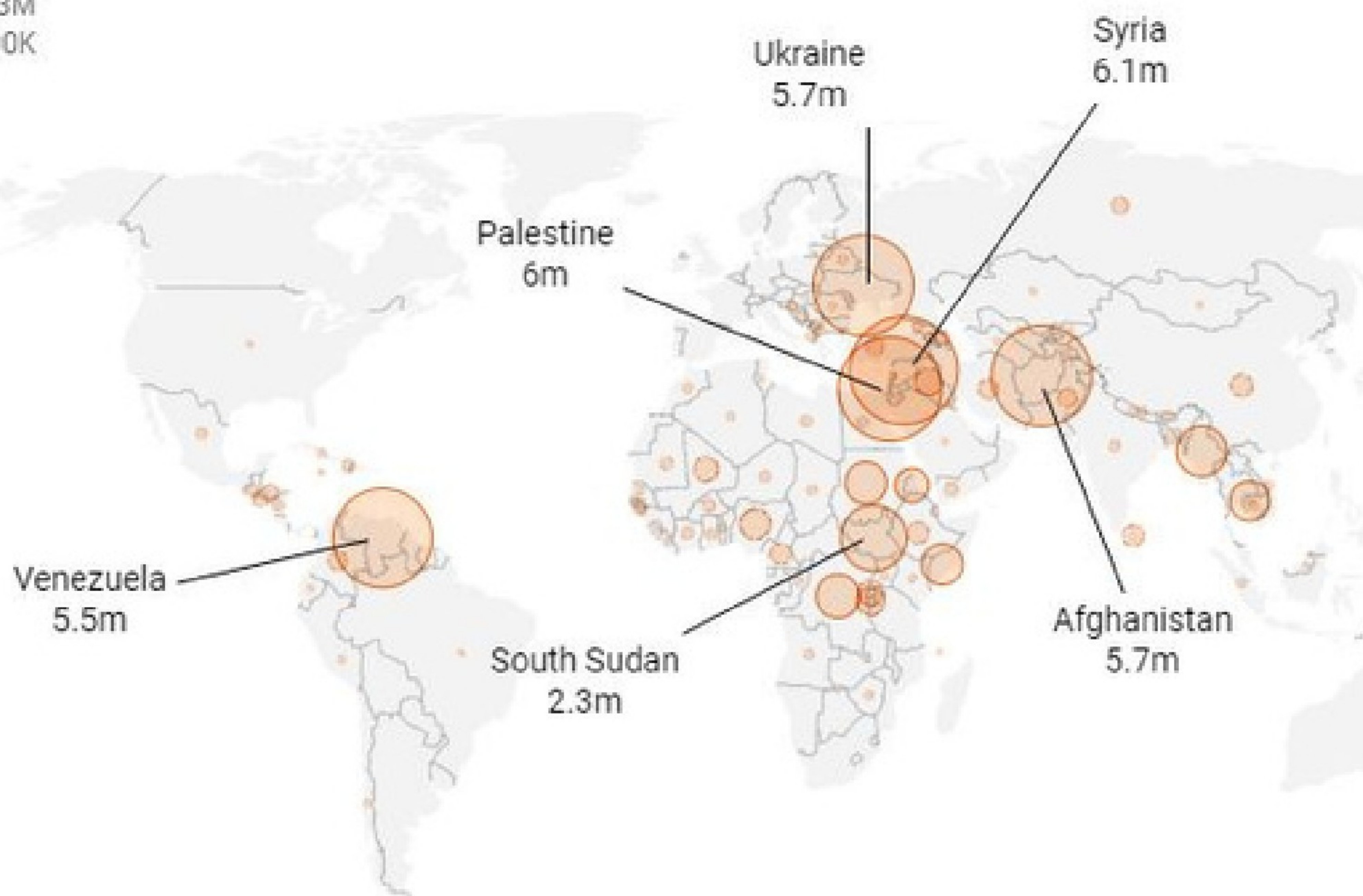


Source: UNHCR | June 14, 2023



@AJLabs ALJADARA

Refugee populations that exceed 1,000 people



THE LOST *and* THE HOST

Turkey hosts the largest number of refugees, with 3.6 million people, followed by the Islamic Republic of Iran with 3.4 million, then Colombia with 2.5 million, followed by Germany and Pakistan with 2.1 and 1.7 million refugees respectively.

WORLD REFUGEE DAY 2023 AND REFUGEES STATISTICS



Indonesian Chapter

In September 2021, UNHCR recorded the number of registered refugees in Indonesia reached 13,273 people. Of this number, 73 percent are adults and 27 percent are children. 7,458 people come from Afghanistan, 1,364 are Somalia, 707 people from Myanmar, 677 from Iraq, and the rest are from other countries. .

Indonesia is not a party to the 1951 Convention relating to the Status of Refugees or its 1967 Protocol, nor does it have a national refugee status determination system.

2016 the President of the Republic of Indonesia signed the Presidential Regulation on the Handling of Refugees, which contains key definitions and sets out processes for the detection, shelter and safeguarding of refugees and asylum-seekers.





MUSEUM ^{IS} OPEN

LOCAL COMMUNITY

MIGRANT

24

REFUGEE

H O U R S

Best Practice





WELCOME TO THE NEW HOME?

Museums around the world are working with migrants and refugees in different ways. Some museums have worked to give refugees a voice, highlighting their personal stories. This can help people to identify with the human side of the crisis. It also helps to counteract the stigma that is sometimes associated with being an immigrant. Other institutions have collaborated with refugees to gain insight from their experiences. Refugees have worked as museum guides or helped visitors to connect with collections. There are also museums dedicated to exploring the migrant experience throughout history. These explain some of the complex issues involved and lend a historical perspective. Other galleries and exhibitions showcase artistic works created by refugees and migrants.

Museum Next
STORY of MY LIFE

We are excited to announce that
we have launch...

new nest



Please join us for a Housewarming Party as we warm up
our new comers with laughter, love, good company and
culture sharing moment.

June 11, 2024 | at 9:00am

123 Anywhere St., Any City

rsvp to +123-456-7890

Indonesia Hidden Heritage Creative Hub



Indonesia Hidden Heritage Creative Hub

Menara Cakrawala, Jl. M.H. Thamrin No.9 Lt 12,
RT.2/RW.1, Kb. Sirih, Kec. Menteng, Kota Jakarta
Pusat, Daerah Khusus Ibukota Jakarta 10340
indonesiahiddenheritage@gmail.com
Hotline (WA Only) 0819 9935 7489

Fostering Innovation and Creativity In
Museum and Heritage Sites

https://linktr.ee/IHH_HUB